

Lesson Plan for Classification Line - Reptiles

- Objectives:**
- Students will learn to observe the characteristics of the families of reptiles.
 - Students will learn to differentiate between the families of reptiles.
 - Students will practice sorting and analytical skills.

- Preparation:**
1. Print out a Reptile Classification Line. Choose either the line with illustrations, or the one without pictures.
 2. If you are using the Classification Line without pictures, find pictures to illustrate each sheet of the classification line. Paste them on the line (under the list of members of the group) before laminating the sheets.
 3. Find sets of flash cards illustrating the families of reptiles or obtain small books, cut them apart, and laminate the pictures of appropriate reptiles. The Audubon series (approx. size = 4 x 6) furnishes excellent photographs which seem to be enhanced when they are laminated. The Peterson Coloring books are also a good resource.
 4. For younger students, you may want to put a coding dot on the back of each card: a different color for each group of reptiles.

- Materials:**
1. Laminated copies of each of the sheets of the Reptile Classification Line.
 2. Picture cards of reptiles that have information concerning the particular reptile.

- Procedure:**
1. Lay the pages of the Classification Line on a long table, or on the floor.
 2. Have each student choose a card, and place it on the sheet where it belongs.
 3. Ask the student why he chose that spot. Students' answers should relate to the characteristics of the reptile.
 4. Proceed until each student has had a turn.
 5. After the activity has been introduced, it may be put in a learning center, or where students can use it in their free time.

- Extension:**
1. Give the student one page of the Classification Line and an appropriate outline form.
 2. Instruct the student to enter the characteristics of the Family of Reptiles listed on the page in the appropriate spaces on the outline form.
 3. Tell the student to find some reptiles that belong to this group and enter their names in the spaces on the outline form. The cards used for sorting on the classification line could be used, or you could have students find the information from other sources.

Note: Templates and instructions for making your own Classification Lines are available from Senari Programs, 23 Nob View Circle, Little Rock, AR 72205. Phone: (501) 225-2796; email: senari@senaril.com Our website is <http://www.senari.com>

Illustrated Classification Lines currently available are: Mammals, Fish, Amphibians, Reptiles, Vertebrates, and Birds.

Reptiles

- **Crocodylians**

Characteristics:

- Dry scaly skin

- **Marine Turtles**

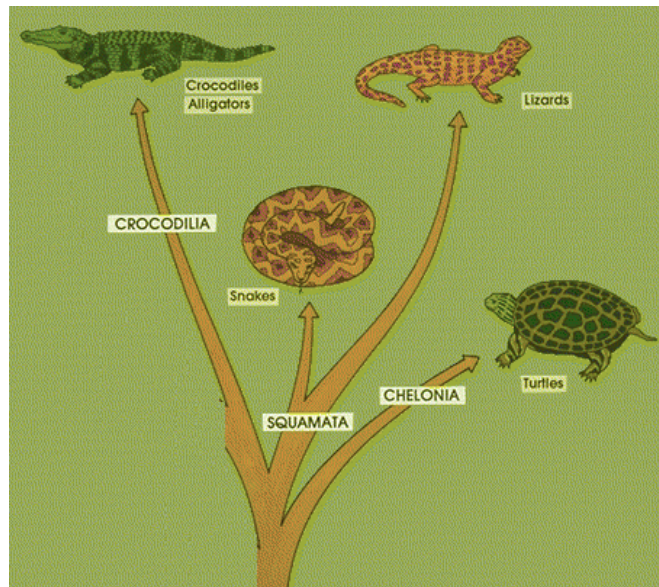
Orders:

- Chelonia – Turtles and tortoises
- Crocodylia – alligators and crocodiles
- Squamata – Lizards and Snakes

- **Tortoises and Freshwater Turtles**

- **Lizards**

- **Snakes**



Reptiles

- **Crocodylians**

- Marine
Turtles

- Tortoises and
Freshwater
Turtles

- Lizards

- Snakes

Characteristics:

- Large
- Well-armored skin
- Sculptured heads
- Protruding eyes and nostrils
- Aquatic, and fond of basking
- Carnivorous

Members:

- Alligators
- Crocodiles
- Caimans

Reptiles

- Crocodilians

- Marine
Turtles

- Tortoises and
Freshwater
Turtles

- Lizards

- **Snakes**

Characteristics:

- No legs, external ears, or eyelids
- Most are terrestrial
- Carnivorous
- Swallow prey whole
- Periodically shed their outer layer of skin

Members:

- Boas
- Colubridae
- Pit Vipers
- Coral Snakes